

Educating Students with Limited English Proficiency and English Language Learners  
**22 Pa. Code §4.26**  
*Updates*

May 2009

---

---

---

---

---

---

---

---

Today's session will:

- Provide an overview of the updates
- Highlight changes
- Provide an open format for discussion

---

---

---

---

---

---

---

---

**PURPOSE**

The purpose of the Basic Education Circular (BEC) is to provide local education agencies (LEAs) with the requirements and interpretations of the legal mandates governing the education of students with Limited English Proficiency (LEP), also known as English Language Learners (ELLs). The information included will be useful in designing, staffing, and evaluating effective programs for ELLs. These mandates and interpretations are based on the Pennsylvania Regulations, Chapters 4 and 11; and on federal law, including Title VI of the Civil Rights Act, the Equal Educational Opportunity Act (EEOA), the No Child Left Behind Act (NCLB), and regulations and case law under those statutes. Citations to these sources are found at the end of this circular.

---

---

---

---

---

---

---

---

**State regulation, 22 Pa. Code § 4.26, states:**

*Every school district shall provide a program for each student whose dominant language is not English for the purpose of facilitating the student's achievement of English proficiency and the academic standards under § 4.12 (relating to academic standards). Programs under this section shall include appropriate bilingual-bicultural or English as a second language (ESL) instruction.*

---

---

---

---

---

---

---

---

**IDENTIFICATION OF ELLs**

Barbara Mowrey and Bob Measel

**Enrollment**

**Student identification for placement in an instructional program for ELLs**

**Parents' Limited Right to Opt Out of ESL/Bilingual Programs**

---

---

---

---

---

---

---

---

???QUESTIONS???

---

---

---

---

---

---

---

---

**THE LANGUAGE INSTRUCTIONAL PROGRAM**  
Ana Sainz de la Pena

- Instructional Models
- Options for English language instructional programs are charted in the following [Characteristics of the Major Program Models for LEP Students](#) (PDF)
- Planned Instruction for English language acquisition (ESL) classes
- Planned Instruction in Academic content areas (content area classes)

---

---

---

---

---

---

---

---

???QUESTIONS???

---

---

---

---

---

---

---

---

**THE LANGUAGE INSTRUCTIONAL PROGRAM**  
Barbara Mowrey & Bob Measel

- Grading of ELLs
- Annual assessment of ELLs
- Language Instructional Program Exit Criteria
- Monitoring of ELLs after language instructional program exit

---

---

---

---

---

---

---

---

## THE LANGUAGE INSTRUCTIONAL PROGRAM

Bob Measel

- Area Vocational-Technical Schools (AVTSs)/ Career and Technical Centers (CTCs)
- Retention/Promotion

10

---

---

---

---

---

---

---

---

???QUESTIONS???

11

---

---

---

---

---

---

---

---

## ELLs with Disabilities

Bob Measel

- The IEP team
- The academic program
- Requirement for annual English language proficiency assessment
- Participation in assessments
- Rules governing assessment accommodations
- Program exit for LEP students

12

---

---

---

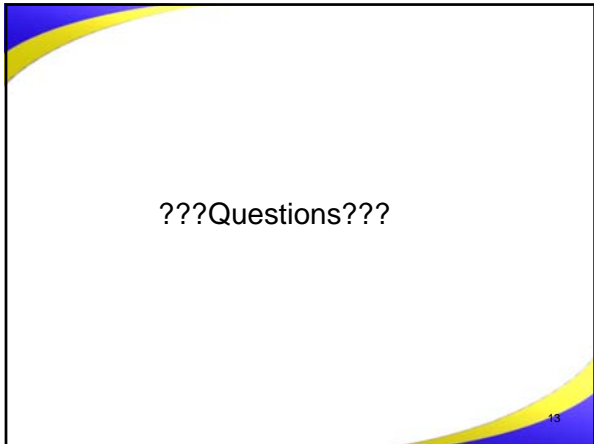
---

---

---

---

---



---

---

---

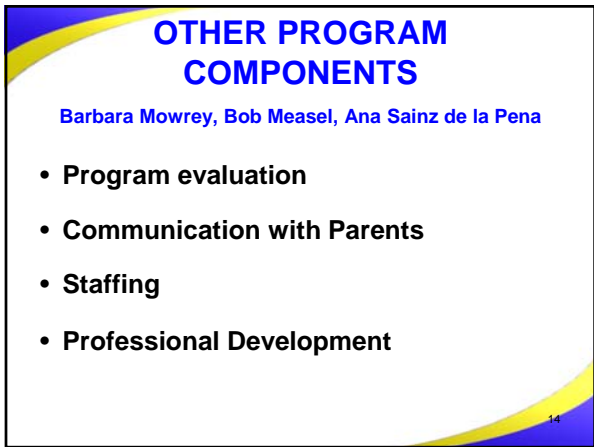
---

---

---

---

---



---

---

---

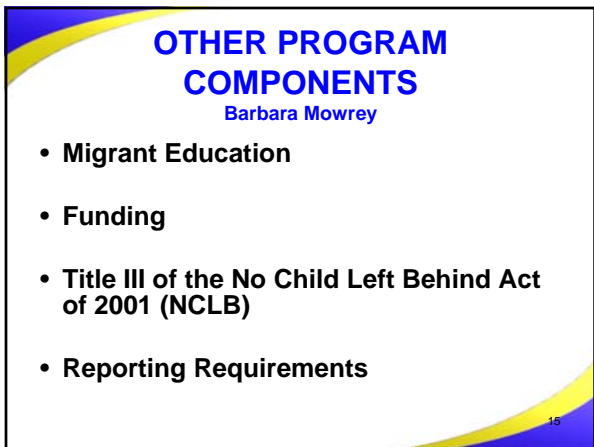
---

---

---

---

---



---

---

---

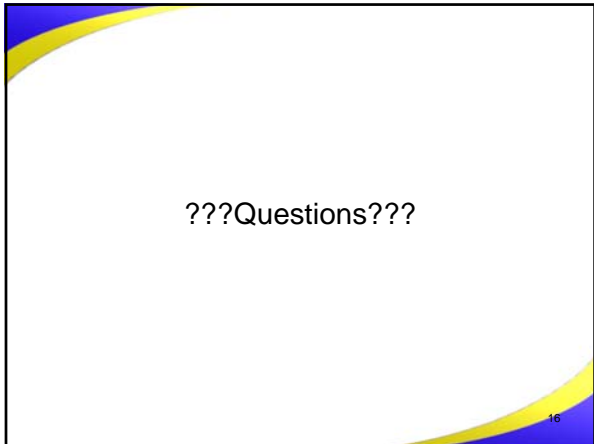
---

---

---

---

---



---

---

---

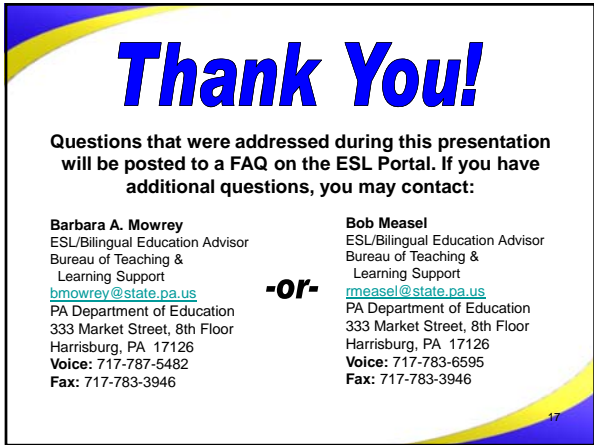
---

---

---

---

---



**Barbara A. Mowrey**  
ESL/Bilingual Education Advisor  
Bureau of Teaching &  
Learning Support  
[bmowrey@state.pa.us](mailto:bmowrey@state.pa.us)  
PA Department of Education  
333 Market Street, 8th Floor  
Harrisburg, PA 17126  
**Voice:** 717-787-5482  
**Fax:** 717-783-3946

**-or-**

**Bob Measel**  
ESL/Bilingual Education Advisor  
Bureau of Teaching &  
Learning Support  
[rmeasel@state.pa.us](mailto:rmeasel@state.pa.us)  
PA Department of Education  
333 Market Street, 8th Floor  
Harrisburg, PA 17126  
**Voice:** 717-783-6595  
**Fax:** 717-783-3946

---

---

---

---

---

---

---

---